

Yggdrasil perforated wooden panel

Wall and ceiling absorbent - silencer

Datasheet

Description

The solution has been developed especially with regard to installation directly on the wall or ceiling.

There are 2 components in the solution. 40mm thick absorbents which is fitted first and then the perforated plate which is fitted on the outside of the absorbents.

The board is in MDF and is available with a traditional Oak, Birch or Ash laminated surface.

The solution has good sound absorption and is very sound dampening. It is therefore suitable for most rooms and areas with a lot of reverberation and noise.

Color

Oak, Birch or Ash surface.

The plate is also available in RAL colors as a special order.



Installation

The plates are mounted directly on the ceiling or on the wall.

Normally attached with assembly glue and screws.

The plates do not fit into the traditional T-system.

Plates for T-system are a special order.

Edge type

Edge: A.

Acoustics - absorption

The solution is classified as sound class B.

The absorption test is carried out without air behind the plates. NRC = 0.85 (noise reduction coefficient), class 1 is calculated in accordance with GB/T16731-1997. $\alpha_w = 0,80$ (The absorption coefficient) class B is calculated according to ISO 11654:1997. See test results on pages 4 and 5.

Sound insulation

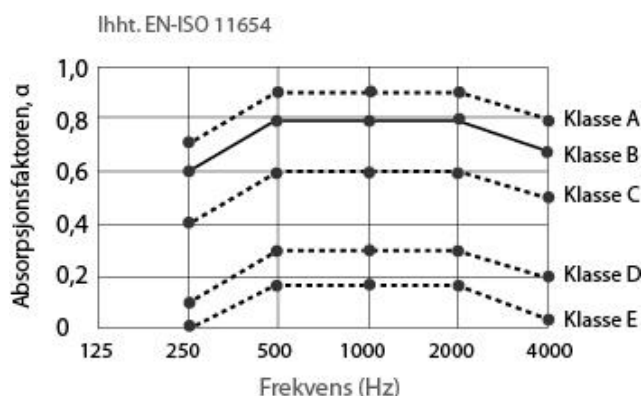
Rw = 12 dB according to ISO 717-1:2003.

Fire class

The solution has B-s1-2, d0, according to EN 13823 and EN13501-1.

The absorbent itself has fire class A2.

Sound classes for absorbers



The above shows sound classes in relation to the absorption coefficient.

Formaldehyd

The absorbent is Class E1 (Indoor product standard).
MDF board and laminate are E1 (Indoor product standard).

Moisture resistance

The plate is form stable at a relative humidity up to 90% and the temperature of 40°C.

Cleaning and maintenance

The surface of the plate can be cleaned of daily dust and can be wiped with a light damp cloth.
However excessive wiping should not cause surface damage, otherwise the plate will lose its performance.

Antibacterial

The plate has a surface that is treated to eliminate bacteria and fungus/mold.
Resistance to fungus has been tested according to ASTM G 21-15.
Resistance to bacterial has been tested according to ISO 22196:2011.

Dimension and weight

52x600x1200mm. 52x1200x1200mm

52x1200x2400mm. The total weight of the plate is approx 13,70 kg/m².

The weight is distributed like this: 4,00 (absorbent) + 9,70 (MDF plate) kg/m².

Waste management

At the end of their service life, the plates and trimmings can be delivered to a municipal landfill.
The glass wool the plates are made of is recyclable.
Packaging can be recycled.

Transport information

The product is not classified as dangerous property.

Insulating properties for 40 mm absorbent

The absorbents have very good thermal insulation.
Laboratory tested according to EN 13964:2014 class 4.10 & EN 12664:2001.
Thermal conductivity = 0.033W/(m·K).
Thermal resistance = 1.191 (m²·K)/W.



Issuer of CE certificate for 40 mm absorbent

Element Materials Technology Rotterdam B.V.

Zekeringstraat 33, 1014 BV, Amsterdam

Netherlands

Notified body No. 2812

Date: 08/06/2020

Certificate No: 2812-CPR-BC5005

According to CE regulation: EN 13964:2014



The product is M1 certified (absorbent)

This means that the product has been tested according the strongest international requirements for exposure to and non use of toxic ingredients.

There are separate requirements for acoustic products and building materials that must be met in order to obtain an M1 certificate.



Issuer of M1 certificate for the product

The Building Information Foundation RTS sr
P.O.B 1004, FI-00101 Helsinki
Finland

EPD (Environmental Product Declaration)

The product has finished the LCA (Life Cycle Assessment) report and received EPD (Environmental Product Declaration):

test program: International EPD® systemet www.environdec.com

Programme operator: EPD internasjonale AB

Box 210 60, 100 31 Stockholm, Sweden

EPD registration number/report/certificate: S-P-08557

Date of publication: 06/03/2023

According to: EN 15804+A2 & ISO 14025 / ISO21930

System limit of A1-D (Cradle to Grave)



Sustainability for the MDF panel

The wood used in the MDF board is produced in terms of sustainability and certified by PEFC or FSC.

Produced in Norway.



Shanghai Jianke Technical Assessment of Construction Co.,Ltd.

检测报告
Test Report

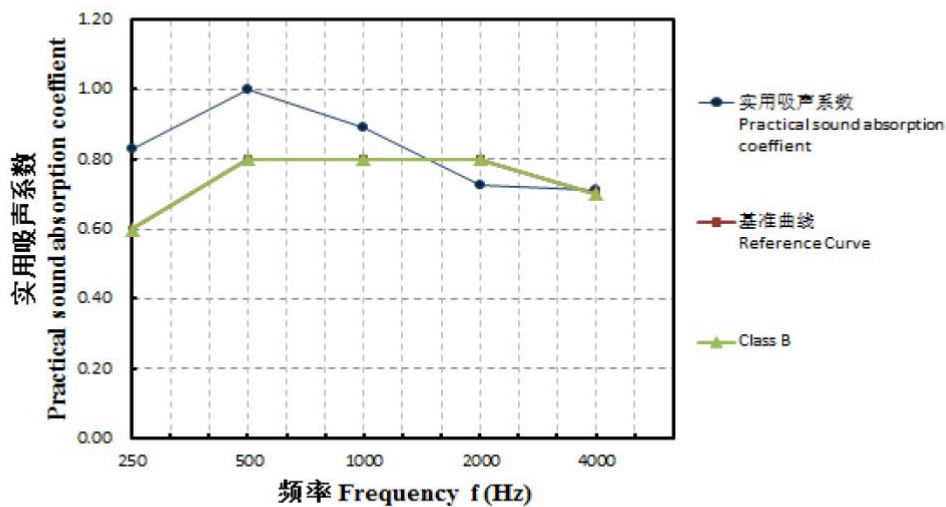
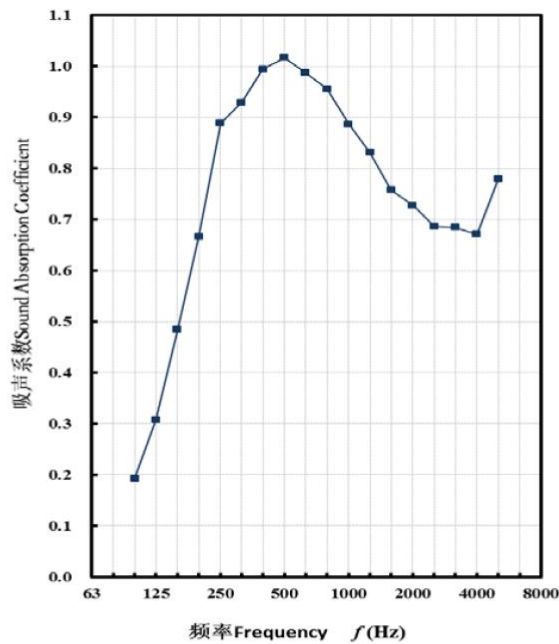
委托编号 Serial Number: GS22-200120

报告编号 Report Number: GS228-200120

第 3 页, 共 4 页 Page 3 of 4

附件: 曲线图、测试图
Annex: Curve of test data , Test picture

1、曲线图 Curve of test data (Yggdrasil perforated MDF plate + 40mm thick glass fiber board, with 0 mm airspace)



注: 基准曲线与 B 级曲线重合
NOTE: Reference Curve coincides with the Curve of Class B