

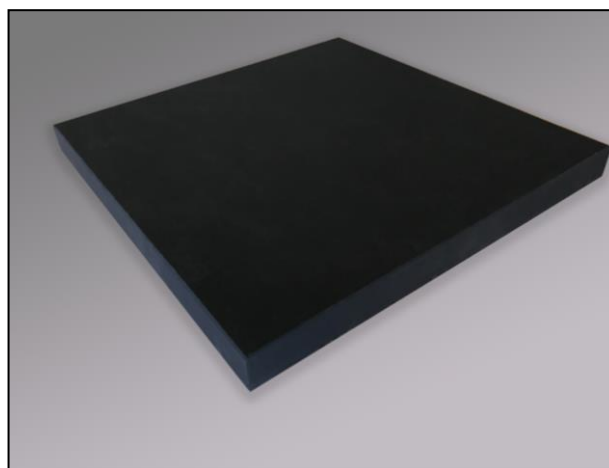
Eira™ dB 49 mm

Wall and ceiling absorbent - silencer

Datasheet

Description

The plate has been developed specifically with regard to mounting directly on the ceiling or on the ceiling/wall where there is no space for a traditional suspension system. It has external dimensions that also fit in the standard T-system. The plate has a traditional finely structured surface with particularly elaborate edge sealing. The plate has an extremely good sound absorption and is very sound dampening in relation to reverberation. The back of the plate consists of 9 mm gypsum board which blocks through sound waves. The plate is therefore very suitable for office and teaching environments, nurseries and rooms with a lot of noise.



Color and light reflection

The color is black and light reflection 0%.
This plate can be ordered in other colors.

Installation

The panels are mounted directly on the ceiling/wall. Normally attached with assembly glue, suspension bracket or screws. The plates also fit into the traditional T-system.

Edge type

Edge: small B.

Acoustic - absorption

The plate is classified as Class A.

The sound absorption test is according to ISO 354:2003 without air behind the plates.
NRC = 0,90.

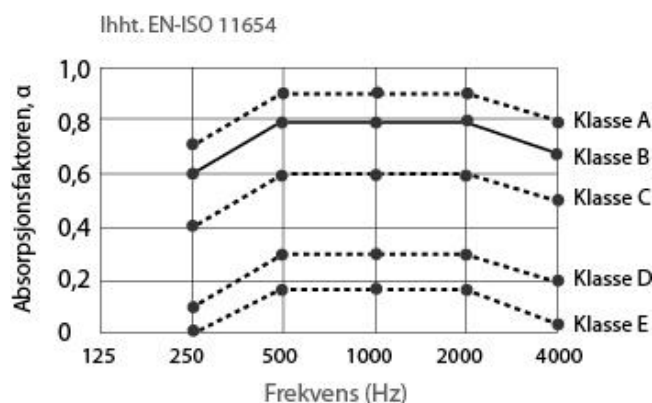
The absorption coefficient (α_w) is calculated to 0,95 according to ISO 11654.

See the test results on page 3.

Sound insulation effect between two rooms:

$D_{n,f,w}$ value 42 dB according to BS EN ISO 717-1:1997

Blocks continuous sound with 29 dB R_w (average value of the whole Hz frequency) according to BS EN ISO 717-1:2013



The above shows sound classes in relation to the absorption coefficient.

Fire class

A2-s1,d0, according to EN 13501-1.

Formaldehyde

Class E1 (Indoor product standard).

Moisture resistance

The plate is form stable at a relative humidity up to 90% and the temperature of 40°C.

Cleaning and maintenance

The surface of the plate can be cleaned of daily dust and can be wiped with a light damp cloth. However excessive wiping should not cause surface damage, otherwise the plate will lose its performance.

Antibacterial

The plate has a surface that is treated to eliminate bacteria and fungus/mold.
Resistance to fungus has been tested according to ASTM G 21-15.
Resistance to bacterial has been tested according to ISO 22196:2011.

Dimension and weight

49x592x592mm

49x592x1192mm

The weight of the plate is approx 5,00 kg/m².

Environment and availability

The raw material of the plate is fiberglass that made of recyclable glass. Packaging can be recycled. Garbage from the plates can be delivered to municipal landfills after the end of their life.

Transport information

The product is not classified as dangerous property.

Thermal insulation (Eira™ 40):

The absorbents have very good thermal insulation.
Laboratory tested according to EN 13964:2014 class 4.10 & EN 12664:2001.
Thermal conductivity = 0.033W/(m·K).
Thermal resistance = 1.191 (m²·K)/W.



Issuer of CE certificate for the product

Element Materials Technology Rotterdam B.V.
Zekeringstraat 33, 1014 BV, Amsterdam
Netherlands

Notified body No. 2812

Date: 08/06/2020

Certificate No: 2812-CPR-BC5005

According to CE regulation: EN 13964:2014



The product is M1 certified (Eira™ 40):

This means that the product has been tested according to the strongest international requirements for exposure to and non-use of toxic ingredients.

There are separate requirements for acoustic products and building materials that must be met in order to obtain an M1 certificate.



Issuer of M1 certificate for the product

The Building Information Foundation RTS sr
P.O.B 1004, FI-00101 Helsinki
Finland

EPD (Environmental Product Declaration)

The product has finished the LCA (Life Cycle Assessment) report and received EPD (Environmental Product Declaration):

test program: International EPD® systemet www.environdec.com

Programme operator: EPD internasjonale AB

Box 210 60, 100 31 Stockholm, Sweden

EPD registration number/report/certificate: S-P-08557

Date of publication: 06/03/2023

According to: EN 15804+A2 & ISO 14025 / ISO 21930

System limit of A1-D (Cradle to Grave)



Test Report

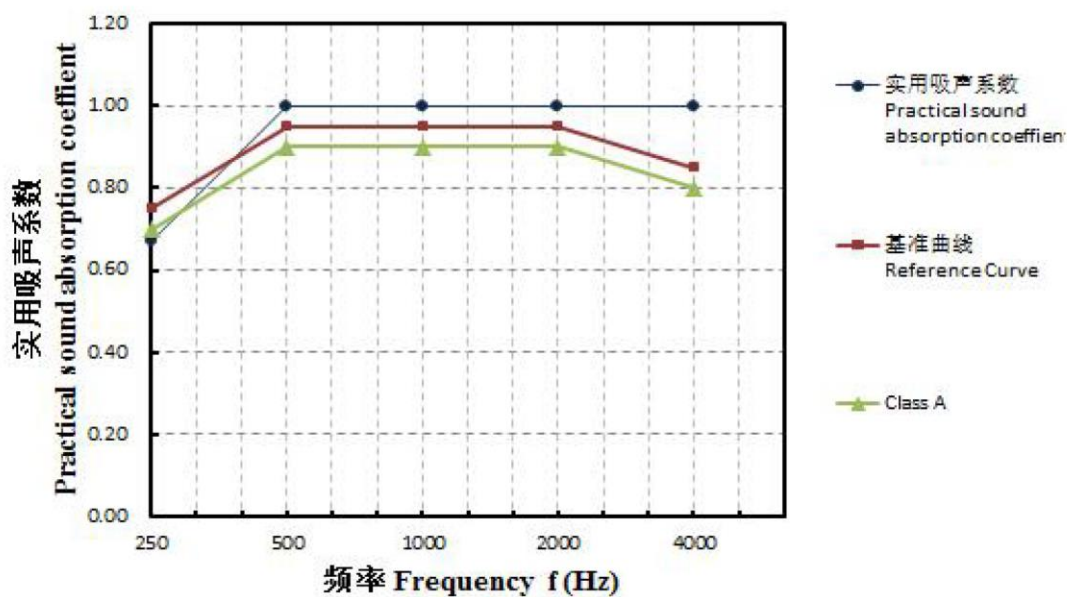
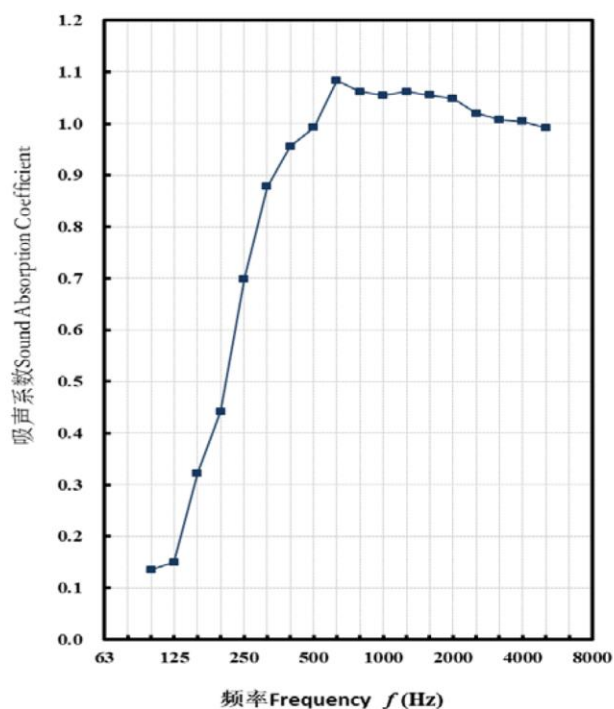
委托编号 Serial Number: GS22-200032

报告编号 Report Number: GS228-200037*

第 3 页, 共 4 页 Page 3 of 4

附件：曲线图、测试图 Annex: Curve of test data , Test picture

1、曲线图 Curve of test data (Eira 40, 0 mm 空腔 Eira 40 with 0 mm airspace)



Sound attenuation in relation to continuous sound



Sound Research Laboratories

Holbrook House, Little Waldingfield
Sudbury, Suffolk CO10 0TH
Tel: +44(0)1787 247595 Fax: +44(0)1787 248420
e-mail: srl@sritsl.com

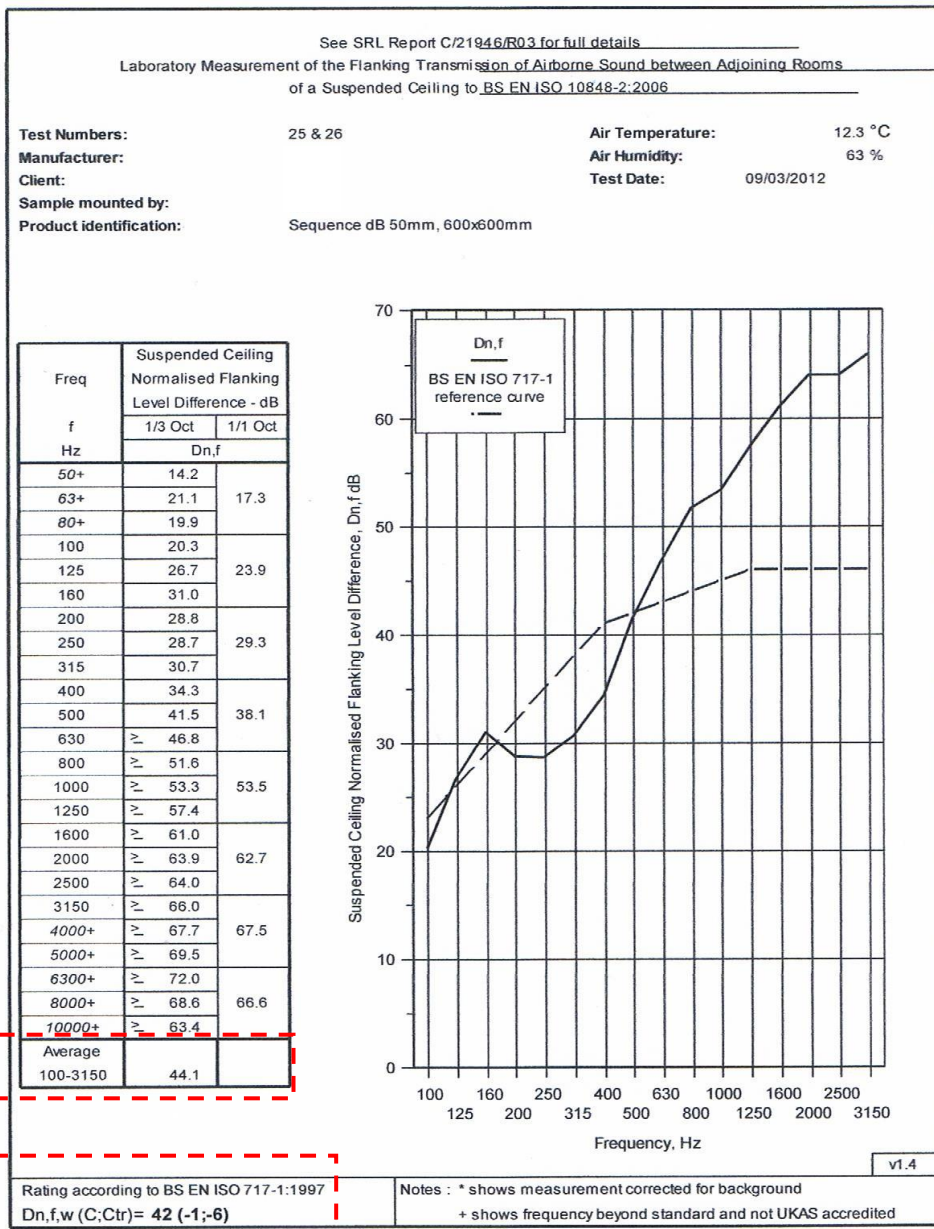


Test Certificate No: 7138

Contract: C/21946

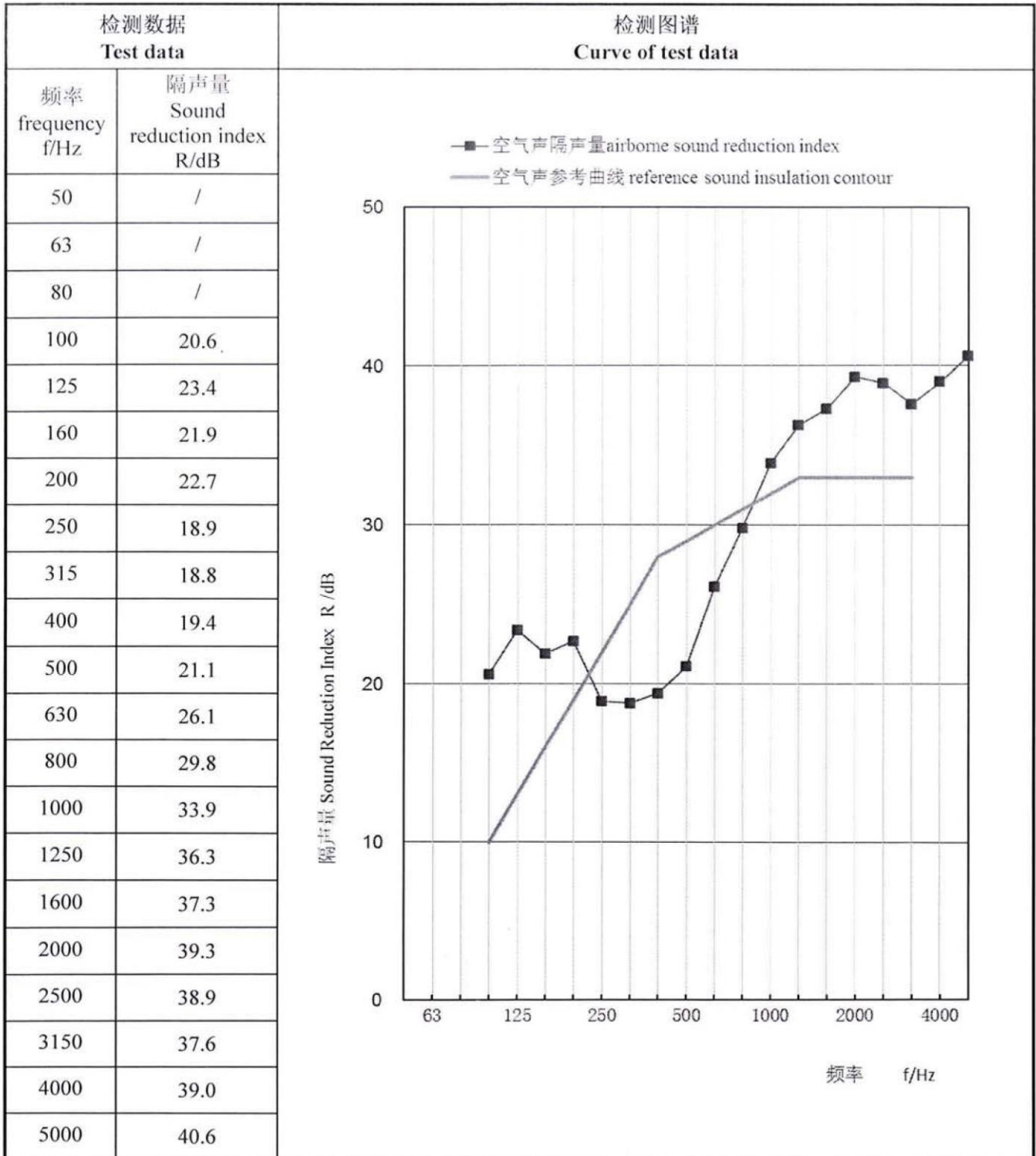
Page 1 of 1

Date: 15 March 2012



Allen Smalls
Quality Manager

Trevor Hickman
Deputy Technical Manager



按照 ISO717-1: 2013 的评价结果: $R_w(C,C_{tr})=29(-1;-4)$ dB

Result accorded to ISO717-1: 2013: $R_w(C,C_{tr})=29(-1;-4)$ dB

本报告的评价结果是根据实验室测量结果得到的。

This report's result is base on laboratory measurements.