

Eira™ 40 mm

Wall and ceiling absorbent - silencer

Datasheet

Description

The plate has been developed especially with regard to mounting directly in the ceiling or on the wall where there is no space for traditional suspension system.

The plate has a traditional finely structured surface.

The plate has a particularly good sound absorption and is very sound dampening. It is very suitable for sound dampening in environments where you want to have a uniform bright surface, e.g. offices, homes, meeting rooms etc. and other rooms with a lot of noise.



Color and light reflection

The nearest white color code is NCS S 0502-R50B and light reflection up to 84%.

Installation

The plates are mounted directly on the ceiling or on the wall. Attached with mounting glue, suspension bracket or screws. The plates do not fit into the traditional T-system.

Edge type

Standard is B edge. All edge types can be made.

Acoustic - absorption

The plate is classified as Class A.

NRC = 0,90 by direct mount.

The absorption coefficient (α_w) is calculated to 0,95 according to ISO 11654.

The sound absorption test is according to ISO 354:2003 without air behind the plates.

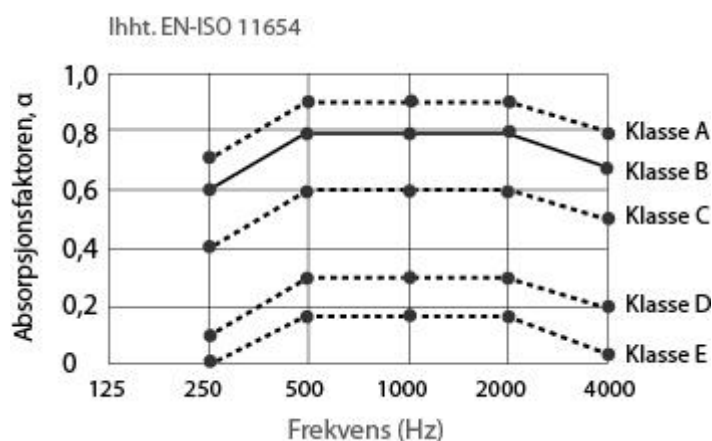
Sound isolation

Rw = 12 dB according to ISO 717-1:2003.

Fire class

A2-s1,d0, according to EN 13501-1.

The following shows sound classes in relation to the absorption coefficient.



Formaldehyde

Class E1 (Indoor product standard).

Moisture resistance

The plate is form stable at a relative humidity up to 90% and the temperature of 40°C.

Cleaning and maintenance

The surface of the plate can be cleaned of daily dust and can be wiped with a light damp cloth. However excessive wiping should not cause surface damage, otherwise the plate will lose its performance.

Antibacterial

The plate has a surface that is treated to eliminate bacteria and fungus/mold.

Resistance to fungus has been tested according to ASTM G 21-15.

Resistance to bacterial has been tested according to ISO 22196:2011.

Dimension and weight

Standard dimension:

40x600x600mm (item number 86010).

Other dimensions can be made, up to 40x1200x2400mm

The weight of the plate is approx 4,20 kg/m².

Environment and availability

The raw material of the plate is fiberglass that made of recyclable glass. Packaging can be recycled. Garbage from the plates can be delivered to municipal landfills after the end of their life.

Transport information

The product is not classified as dangerous property.

Thermal insulation

The absorbents have very good thermal insulation.

Laboratory tested according to EN 13964:2014 class 4.10 & EN 12664:2001.

Thermal conductivity = 0.033W/(m·K).

Thermal resistance = 1.191 (m²·K)/W.



Issuer of CE certificate for the product

Element Materials Technology Rotterdam B.V.

Zekeringstraat 33, 1014 BV, Amsterdam

Netherlands

Notified body No. 2812

Date: 08/06/2020

Certificate No: 2812-CPR-BC5005

According to CE regulation: EN 13964:2014



The product is M1 certified

This means that the product has been tested according the strongest international requirements for exposure to and non use of toxic ingredients.

There are separate requirements for acoustic products and building materials that must be met in order to obtain an M1 certificate.



Issuer of M1 certificate for the product

The Building Information Foundation RTS sr
P.O.B 1004, FI-00101 Helsinki
Finland

EPD (Environmental Product Declaration)

The product has finished the LCA (Life Cycle Assessment) report and received EPD (Environmental Product Declaration):

test program: International EPD® systemet www.environdec.com

Programme operator: EPD internasjonale AB

Box 210 60, 100 31 Stockholm, Sweden

EPD registration number/report/certificate: S-P-08557

Date of publication: 06/03/2023

According to: EN 15804+A2 & ISO 14025 / ISO21930

System limit of A1-D (Cradle to Grave)



THE INTERNATIONAL EPD® SYSTEM

Test Report

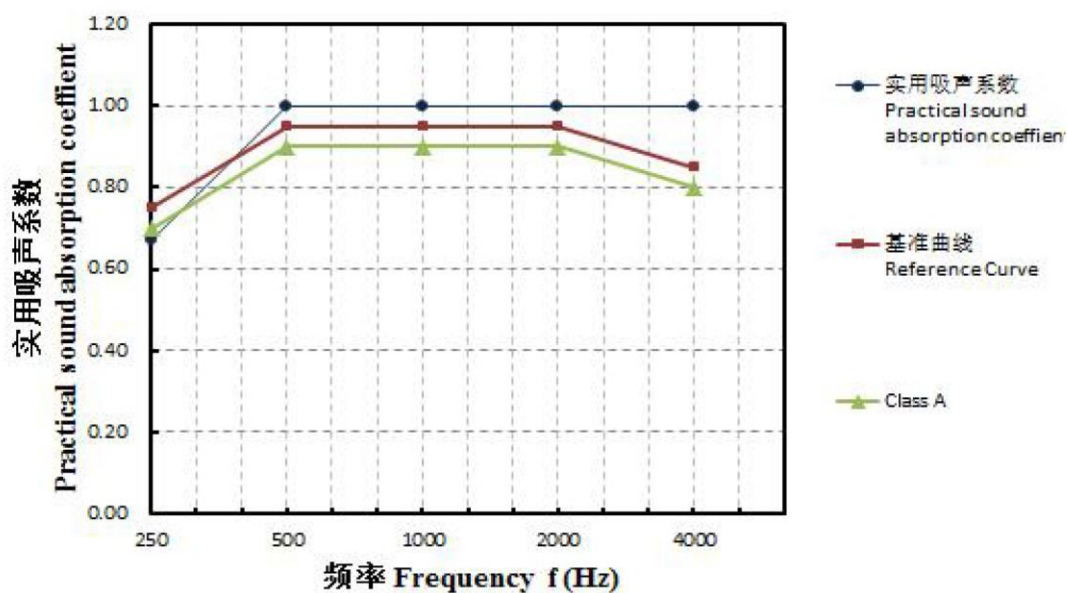
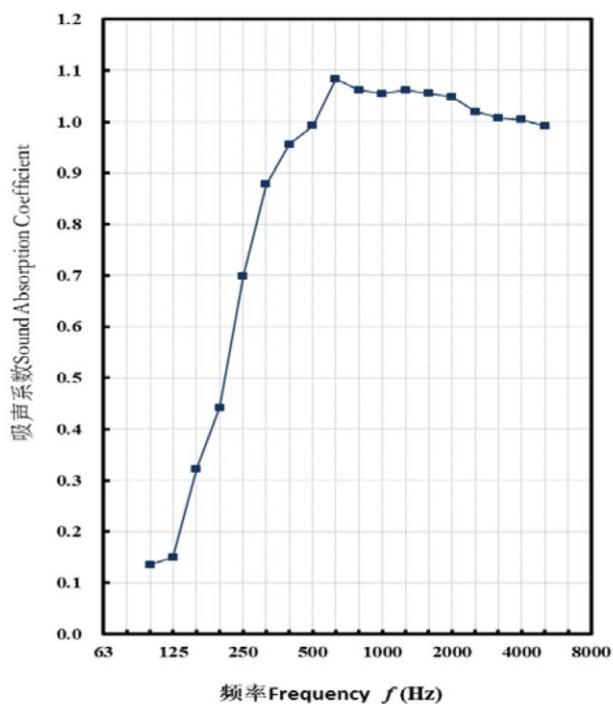
委托编号 Serial Number: GS22-200032

报告编号 Report Number: GS228-200037*

第 3 页, 共 4 页 Page 3 of 4

附件：曲线图、测试图 Annex: Curve of test data , Test picture

1、曲线图 Curve of test data (Eira 40, 0 mm 空腔 Eira 40 with 0 mm airspace)



Test Report

委托编号 Serial Number: GS22-200033

报告编号 Report Number: GS228-200038*

第 3 页, 共 4 页 Page 3 of 4

附件：曲线图、测试图 Annex: Curve of test data , Test picture

1、曲线图 Curve of test data (Eira 40, 50 mm 空腔 Eira 40 with 50 mm airspace)

