

# Loke™ 40 mm Hygiene

Wall and ceiling absorbent - silencer

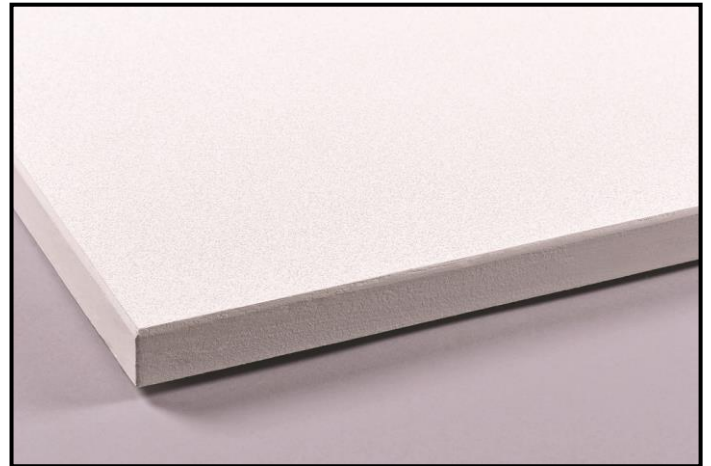
Datasheet

## Description

The plate has been developed especially with regard to mounting directly on the ceiling or on the wall where there is no space for a traditional suspension system.

The plate has a traditional textured surface with particularly elaborate edge sealing.

The board has a particularly good sound absorption and is very sound dampening. With high light reflection, it is therefore very suitable for office and teaching environments, nurseries and rooms with a lot of noise.



## Color and light reflection

The nearest white color code is NCS 0502-Y and light reflection up to 84 %. Also available in grey (RAL 7037)  
The plate is also available in other RAL colors as custom made.

## Installation

The plates are mounted directly on the ceiling or on the wall.  
Normally attached with assembly glue, suspension bracket or screws.  
The plates do not fit into the traditional T-system.

## Edge type

Edge: small B.

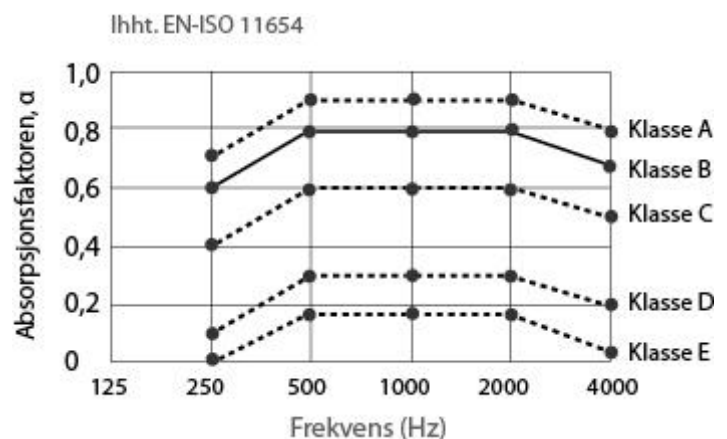
## Acoustic - absorption

The plate is classified as Class A.  
The sound absorption test is according to ISO 354:2003 without air behind the plates.  
NRC = 0,90.

The absorption coefficient ( $\alpha_w$ ) is calculated to 0,90 according to ISO 11654.  
See test results on 4 and 5.

## Sound isolation

Rw = 12 dB according to ISO 717-1:2003.



The above shows sound classes in relation to the absorption coefficient.

### Fire class

A2-s1,d0, according to EN 13501-1.

### Formaldehyde

Class E1 (Indoor product standard).

### Moisture resistance

The plate is form stable at a relative humidity up to 90% and the temperature of 40°C.

### Cleaning and maintenance

The surface of the plate can be cleaned of daily dust and can be wiped with a light damp cloth. However excessive wiping should not cause surface damage, otherwise the plate will lose its performance.

### Antibacterial

The plate has edges and a surface that has been treated to eliminate bacteria and fungus/mould.

Resistance to fungus and mold has been tested in accordance with ASTM G 21-13.

Resistance to Escherichia Coli and Staphylococcus has been tested in accordance with ASTM E 2149-2013a. Resistance to Staphylococcus Aureus ATCC 6538P, Escherichia Coli ATCC 8739 has been tested in accordance with ISO 22196:2011.

Water-based glue that attaches the board's components individually is treated in the same way.

### Hygiene surface

The plate's visible surface and edges are coated with waterproof paint and the plate can therefore be washed with ordinary household detergent on these sides. After washing, the plate will appear clean after drying time.

### Dimension and weight

40x200x600mm. 40x300x600mm. 40x600x600mm. 40x600x1200mm. 40x1000x1200mm.  
40x1200x1200mm. 40x1200x2400mm. The weight of the plate is approx 4,00 kg/m<sup>2</sup>.

### Environment and availability

The raw material of the plate is fiberglass that made of recyclable glass. Packaging can be recycled. Garbage from the plates can be delivered to municipal landfills after the end of their life.

### Transport information

The product is not classified as dangerous property.

### Thermal insulation

The absorbents have very good thermal insulation.

Laboratory tested according to EN 13964:2014 class 4.10 & EN 12664:2001.

Thermal conductivity = 0.033W/(m·K).

Thermal resistance = 1.191 (m<sup>2</sup>·K)/W.



### Issuer of CE certificate for the product

Element Materials Technology Rotterdam B.V.  
Zekeringstraat 33, 1014 BV, Amsterdam  
Netherlands  
Notified body No. 2812  
Date: 08/06/2020  
Certificate No.: 2812-CPR-BC5005  
According to CE regulation: EN 13964:2014



### The product is M1 certified

This means that the product has been tested according the strongest international requirements for exposure to and non use of toxic ingredients.

There are separate requirements for acoustic products and building materials that must be met in order to obtain an M1 certificate.



### Issuer of M1 certificate for the product

The Building Information Foundation RTS sr  
P.O.B 1004, FI-00101 Helsinki  
Finland

### EPD (Environmental Product Declaration)

The product has finished the LCA (Life Cycle Assessment) report and received EPD (Environmental Product Declaration):  
test program: International EPD® systemet [www.environdec.com](http://www.environdec.com)  
Programme operator: EPD internasjonale AB  
Box 210 60, 100 31 Stockholm, Sweden  
EPD registration number/report/certificate: S-P-08557  
Date of publication: 06/03/2023  
According to: EN 15804+A2 & ISO 14025 / ISO21930  
System limit of A1-D (Cradle to Grave)



### Test Report

委托编号 Serial Number: GS22-210050

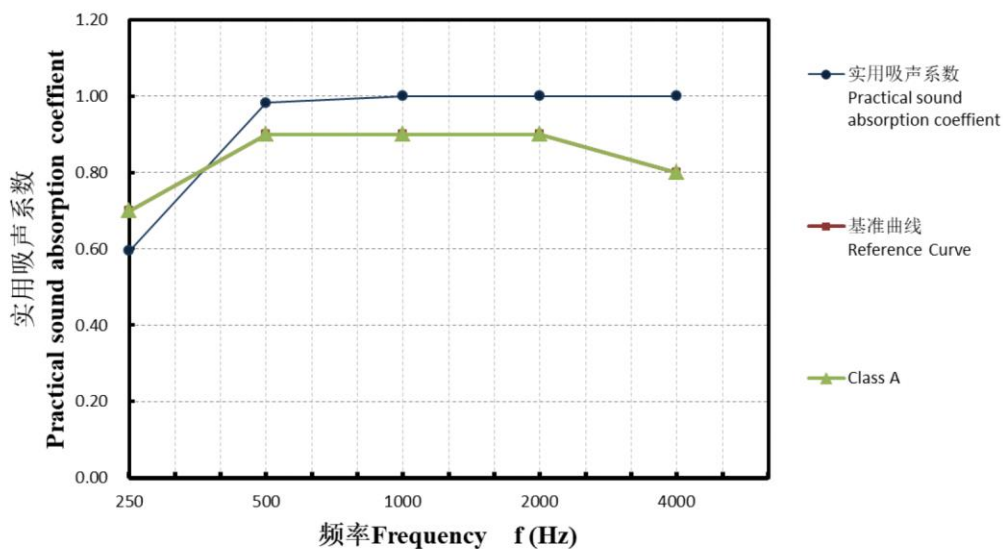
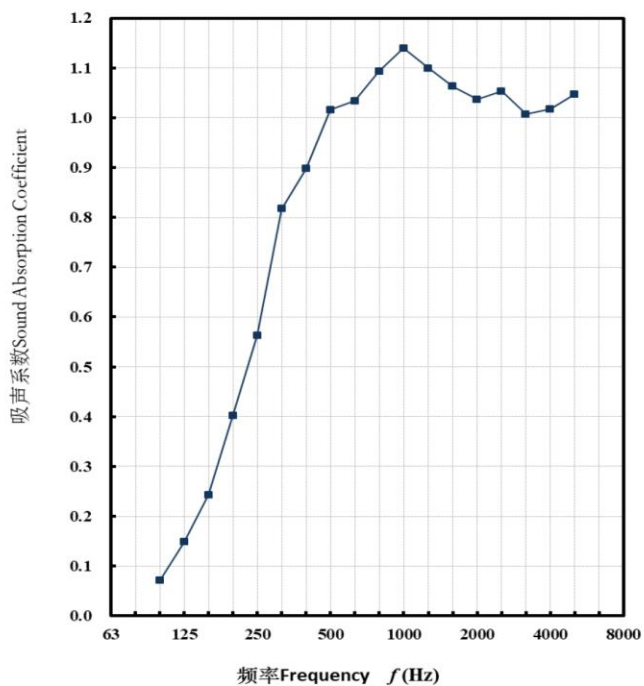
报告编号 Report Number: GS228-210040

第 3 页, 共 4 页 Page 3 of 4

附件：曲线图、测试图

Annex: Curve of test data , Test picture

1、曲线图 Curve of test data (Loke Hygiene 40, 0 mm 空腔 Loke Hygiene 40 with 0 mm airspace)



注：基准曲线与 A 级曲线重合

NOTE: Reference Curve coincides with the Curve of Class A

Sound absorption coefficient of 50 mm air behind the plates.

Test Report

委托编号 Serial Number: GS22-210051

报告编号 Report Number: GS228-210041

第 3 页, 共 4 页 Page 3 of 4

附件: 曲线图、测试图

Annex: Curve of test data , Test picture

1、曲线图 Curve of test data (Loke Hygiene 40, 50 mm 空腔 Loke Hygiene 40 with 50 mm airspace)

